

# Invasive non-native species ID

## Crayfish

**White-clawed Crayfish, *Austropotamobius pallipes***  
Native to UK

**Marbled Crayfish *Procambarus fallax* var. *virginalis***

**Narrow-clawed Crayfish *Astacus leptodactylus***

**Noble Crayfish *Astacus astacus***

**Red Swamp Crayfish *Procambarus clarkii***

**Redclaw Crayfish *Cherax quadricarinatus***

**Rusty Crayfish *Orconectes rusticus***

**Signal Crayfish *Pacifastacus leniusculus***

**Spiny-cheek Crayfish *Orconectes limosus***

**Virile Crayfish *Orconectes virilis***

**White River Crayfish *Procambarus acutus acutus***



**White-clawed Crayfish. Widespread in England, Wales and Ireland; two known populations in Scotland.**

Only native species of crayfish in the UK. Decline due to habitat change, crayfish plague and competition from non-native crayfish.

Key to ID is dirty-white to pale pink underside

Usually 10-12cm long

Upperparts brown; rare blue morph exists

Carapace smooth and pitted; shoulder spines



**Marbled Crayfish. Not yet established in the UK but present in Europe**

Marbled patterning on robust body distinctive

Claws proportionally smaller than other crayfish

Usually less than 10cm long, can reach 13cm

Can be brown, dark brown, green or blue

Carapace smooth with spines on side



**Narrow-clawed Crayfish. Established in SE England and isolated populations elsewhere**

Colour variable, leg joints often dark orange

Claws distinctly long, narrow, pale underneath

15cm to 20cm long

Can be brown, dark brown, green or blue

Carapace slightly rough, spines on shoulders

# Invasive non-native species ID

## Crayfish



BH. Zell - Treball propi CC BY-SA 3.0

**Noble Crayfish. A few sites in SW England but no recent records; has not proved invasive in UK. Declining and protected species in EU.**

Usually dark brown to beige in colour

Claws large and robust. Underside often red

Less than 15cm long

Orange and blue morphs are known

Carapace often rough, with spines on shoulders



Photo © Trevor Renals

**Red Swamp Crayfish. A number of populations in the London area.**

Bright red spines on claws

Claws thin and often s-shaped

10-15cm long

Adults dark red, young light brown/green

Carapace rough



Photo © Trevor Renals

**Signal Crayfish. Very common across England. Some populations in Scotland and Wales.**

White or turquoise spot at junction of claw

Claws reddish above and bright red below

12-16cm long, but can reach 22cm

Blue, red brown, light or dark brown upperparts

Smooth carapace, sometimes slightly pitted

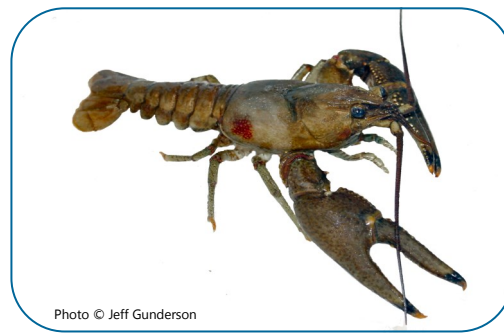


Photo © Jeff Gunderson

**Rusty Crayfish. Not yet established in the UK but present in Europe**

Body brown-green

Claws large and robust, orange tipped

Usually 9cm long

Rusty spots on carapace, abdomen and claws

Carapace smooth with small spines on sides

# Invasive non-native species ID

## Crayfish



Photo © 5snake5 CC-BY-SA

**Redclaw Crayfish.** Not yet established in the UK; present in Europe. Only species that is legal as a pet in England and Wales.

Body usually blue, mottled with beige, and red.

Antennae and claws very long in adult males

Up to  $\geq 35$  cm

Red patch on outer margin of claw in males

Carapace smooth



Photo © Trevor Renals

**Spiny-cheek Crayfish.** Known from a number of counties and spreading

Body pale or dark brown-green

Claws often with orange tip and black band

Up to 12cm long

Abdomen has dark red bands, tip of legs orange

Prominent spines on 'cheek'



Photo © Ian Schmierer

**Virile Crayfish.** Number of sites in the R. Lee catchment (north London) and spreading.

Rich dark brown in colour

Claws flattened with many yellow/orange warts

Usually 10-12cm long

Light brown 'wine-glass' shape pattern on back

Carapace smooth, with spines on sides



Photo © Tennessee Wildlife Resources

**White River Crayfish.** Known from a single site near Windsor.

Body dark red; black wedge on dorsal abdomen

Claws slender and delicate with dark tubercles

Can reach 6-11cm in length

Can range from pinkish tan to brownish olive

Carapace is rough and granular

Other photos credited to GB NNS

To record your sightings, visit [www.nonnativespecies.org/recording](http://www.nonnativespecies.org/recording)

Holdich D.M. (2009). Identifying crayfish in British waters. In: Crayfish conservation in the British Isles. Brickland J, Holdich DM and Imhoff EM (eds), pp. 147-199. [http://www.crayfish.ro/annexe/Crayfish\\_conservation-UK-2009.pdf](http://www.crayfish.ro/annexe/Crayfish_conservation-UK-2009.pdf)